

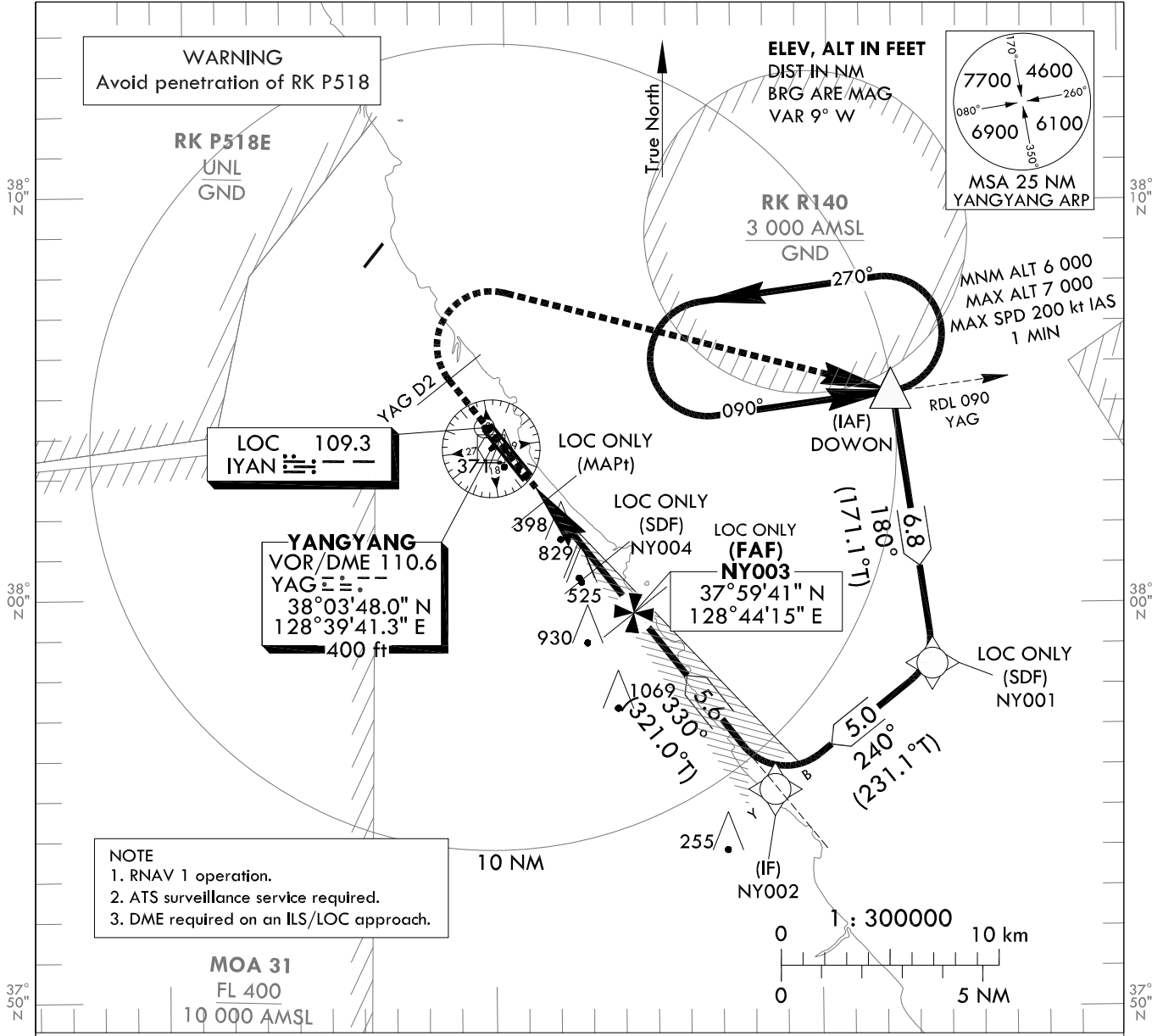
**INSTRUMENT APPROACH CHART - ICAO**

**AERODROME ELEV 241 ft**  
HEIGHTS RELATED TO  
THR RWY 33 - ELEV 227 ft

GANGNEUNG APP 124.6  
YANGYANG TWR 118.85  
124.375

**YANGYANG/Intl(RKNY)**  
**ILS Z or LOC Z RWY 33**

Note : Approach and circle-to-land under ICAO Flight Procedures.



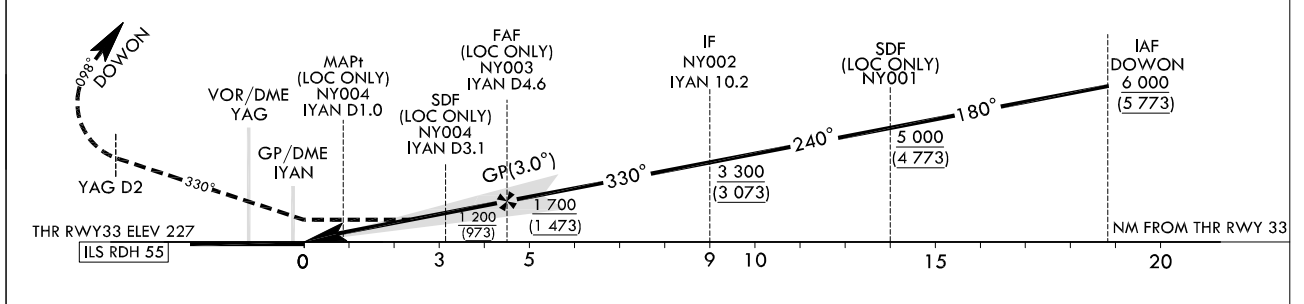
**NOTE**  
1. RNAV 1 operation.  
2. ATS surveillance service required.  
3. DME required on an ILS/LOC approach.

128°30" N 128°40" N 128°50" N

RECOMMENDED PROFILE(LOC ONLY)	DME YAG	4	3	2	1.4
Final Approach Gradient 5.68%(344.8 ft/NM)	ALT(HGT)	1 526	1 203	879	658
to SDF, 5.12%(311.2 ft/NM to THR)	(1 300)	(976)	(653)	(459)	

**MISSED APPROACH**  
Climb straight ahead until YAG D2, then turn right direct to DOWON and hold at 6 000 ft.  
Hold as published.

TRANSITION ALT 14 000  
TRANSITION LVL FL 140



CATEGORY	DA(H)/MDA(H)	A	B	C	D	Knots							
						60	90	120	150	180			
CAT 1	FULL	427 (200)	RVR 550 m, VIS 800 m				Rate of descent	V/V fpm	318	478	637	796	955
	ALS INOP		1 200 m										
LOC	FULL	700 (473)	1 500 m				* Timing Not authorized for defining MAPt. * Circling Not authorized west of RWY 15-33, area on between RDL 150 and RDL 315 YAG and area beyond 6 DME of between RDL 315 and RDL 360 YAG.						
	ALS INOP		2 200 m										
Circling			700(460) 2 400 m	740(500) 2 800 m	1 160(920) 4 300 m	1 180(940) 4 600 m							

YANGYANG/Intl(RKNY)

ILS Z or LOC Z RWY 33

AERONAUTICAL DATA TABULATION

ILS/LOC Z Approach to RWY 33 from DOWON		
	Fix/Point	Coordinates
	DOWON(IAF)	38°05'14.5"N 128°52'13.8"E
	NY001(SDF) BRG 239.02°	37°58'31.2"N 128°53'33.6"E
	NY002(IF) BRG 329.01° / 10.15NM IYAN	37°55'22.3"N 128°48'38.8"E
	NY003(FAF) BRG 329.52° / 4.55NM IYAN	37°59'40.6"N 128°44'14.9"E
	NY004(SDF LOC only) BRG 329.52° / 3.10NM IYAN	38°00'49.2"N 128°43'04.7"E
	MAPt(LOC only) BRG 329.52° / 1.00NM IYAN	38°02'29.7"N 128°41'22.0"E
	THR RWY33	38°03'09.21"N 128°40'41.25"E
	IYAN DME	38°03'13.8"N 128°40'30.0"E
	D2 YAG R 329 YAG/2.00NM YAG	38°05'28.5"N 128°38'18.8"E
	DOWON R 090 YAG/10.00NM YAG	38°05'14.5"N 128°52'13.8"E

Change : Information of coordinates.

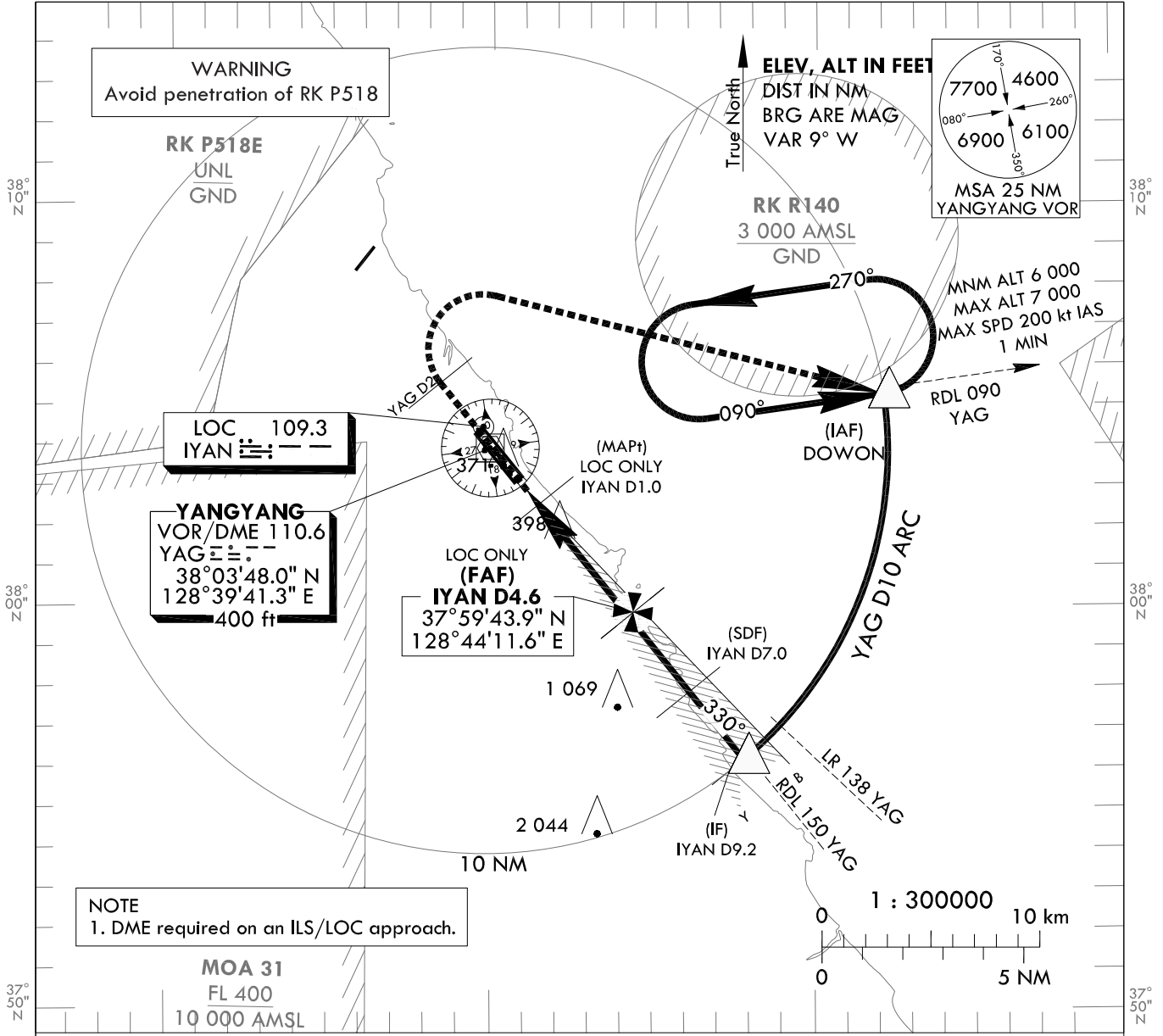
**INSTRUMENT  
APPROACH  
CHART - ICAO**

**AERODROME ELEV 241 ft**  
HEIGHTS RELATED TO  
THR RWY 33 - ELEV 227 ft

GANGNEUNG APP 124.6  
YANGYANG TWR 118.85  
124.375

**YANGYANG/IntI(RKNY)**  
**ILS Y or LOC Y RWY 33**

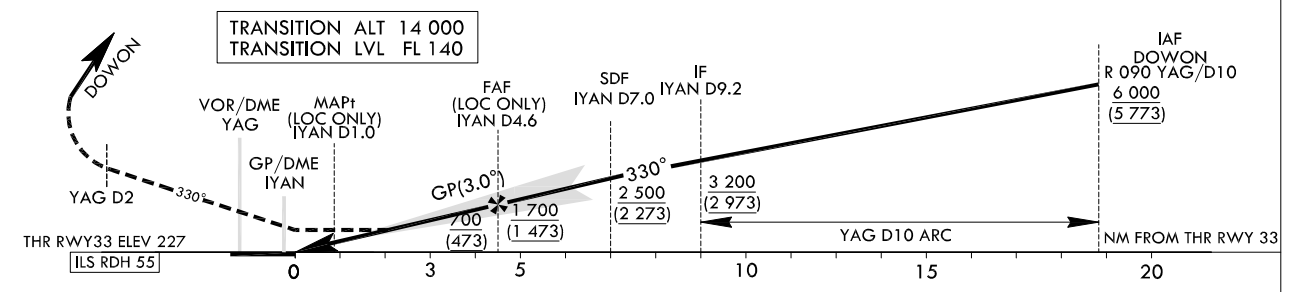
Note : Approach and circle-to-land under ICAO Flight Procedures.



**NOTE**  
1. DME required on an ILS/LOC approach.

RECOMMENDED PROFILE(LOC ONLY)	DME YAG	4	3	2	1.4
Final Approach Gradient 5.32%, 324 ft/NM	ALT(HGT)	1 526 (1 300)	1 203 (976)	879 (653)	658 (459)

**MISSED APPROACH**  
Climb straight ahead until YAG D2, then turn right to DOWN and hold at 6 000 ft. Hold as published.



YANGYANG/Intl(RKNY)

ILS Y or LOC Y RWY 33

AERONAUTICAL DATA TABULATION

ILS/LOC Y Approach to RWY 33 from DOWON		
	Fix/Point	Coordinates
	DOWON(IAF)	38°05'14.5"N 128°52'13.8"E
	9.2D IYAN(IF) BRG 329.54° / 9.16 NM IYAN	37°56'08.9"N 128°47'51.2"E
	7.0D IYAN(SDF) BRG 329.54° / 7.00 NM IYAN	37°57'49.6"N 128°46'08.4"E
	4.6D IYAN(FAF) BRG 329.54° / 4.55 NM IYAN	37°59'44.0"N 128°44'11.6"E
	MAPt(LOC only) BRG 329.54° / 1.00 NM IYAN	38°02'29.7"N 128°41'22.0"E
	THR RWY33	38°03'09.21"N 128°40'41.25"E
	IYAN DME	38°03'13.8"N 128°40'30.0"E
	D2 YAG R 330 YAG/ 2.00 NM YAG	38°05'28.5"N 128°38'18.6"E
	DOWON R 090 YAG/ 10.00 NM YAG	38°05'14.5"N 128°52'13.8"E

Change : Information of coordinates.